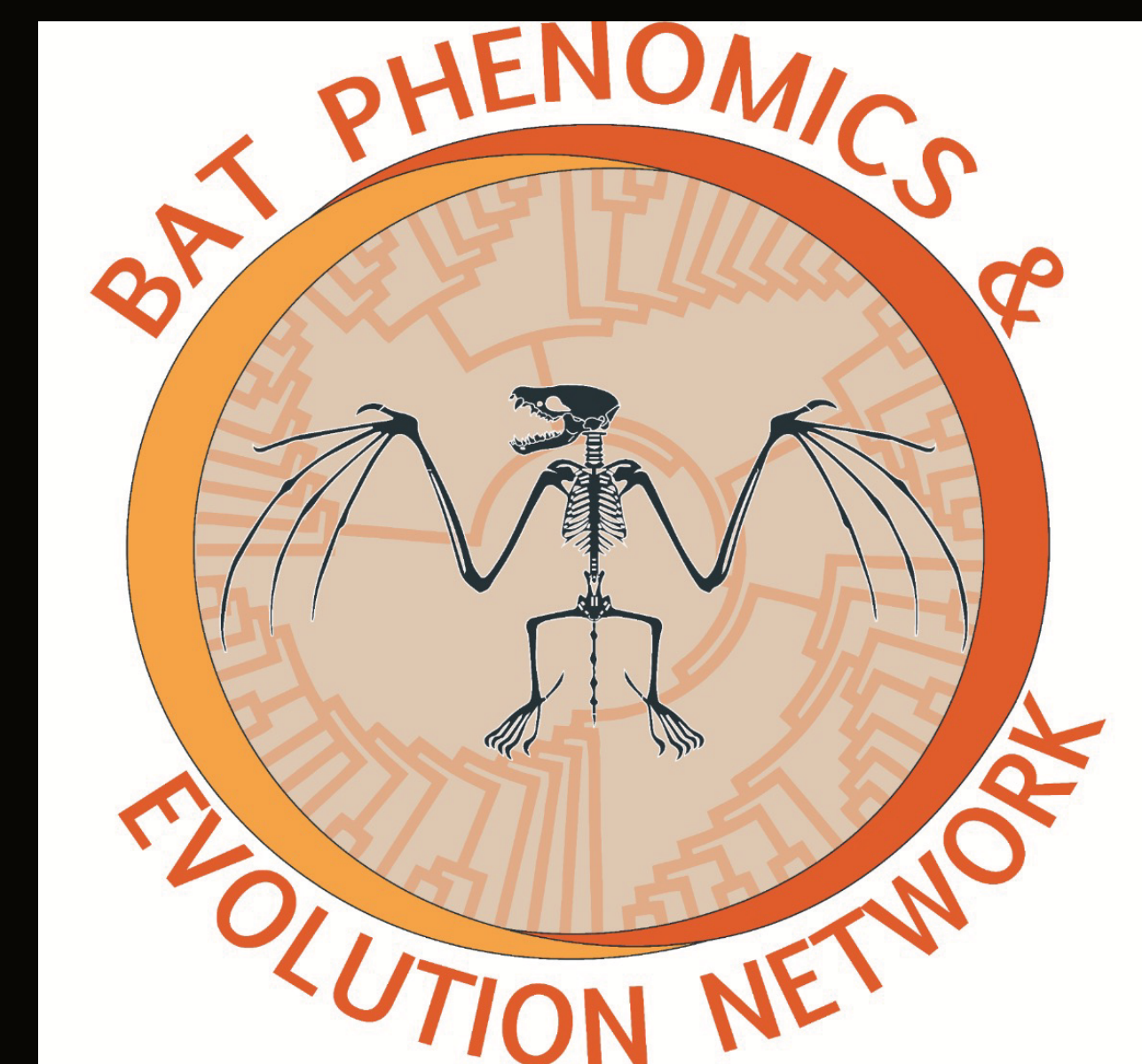
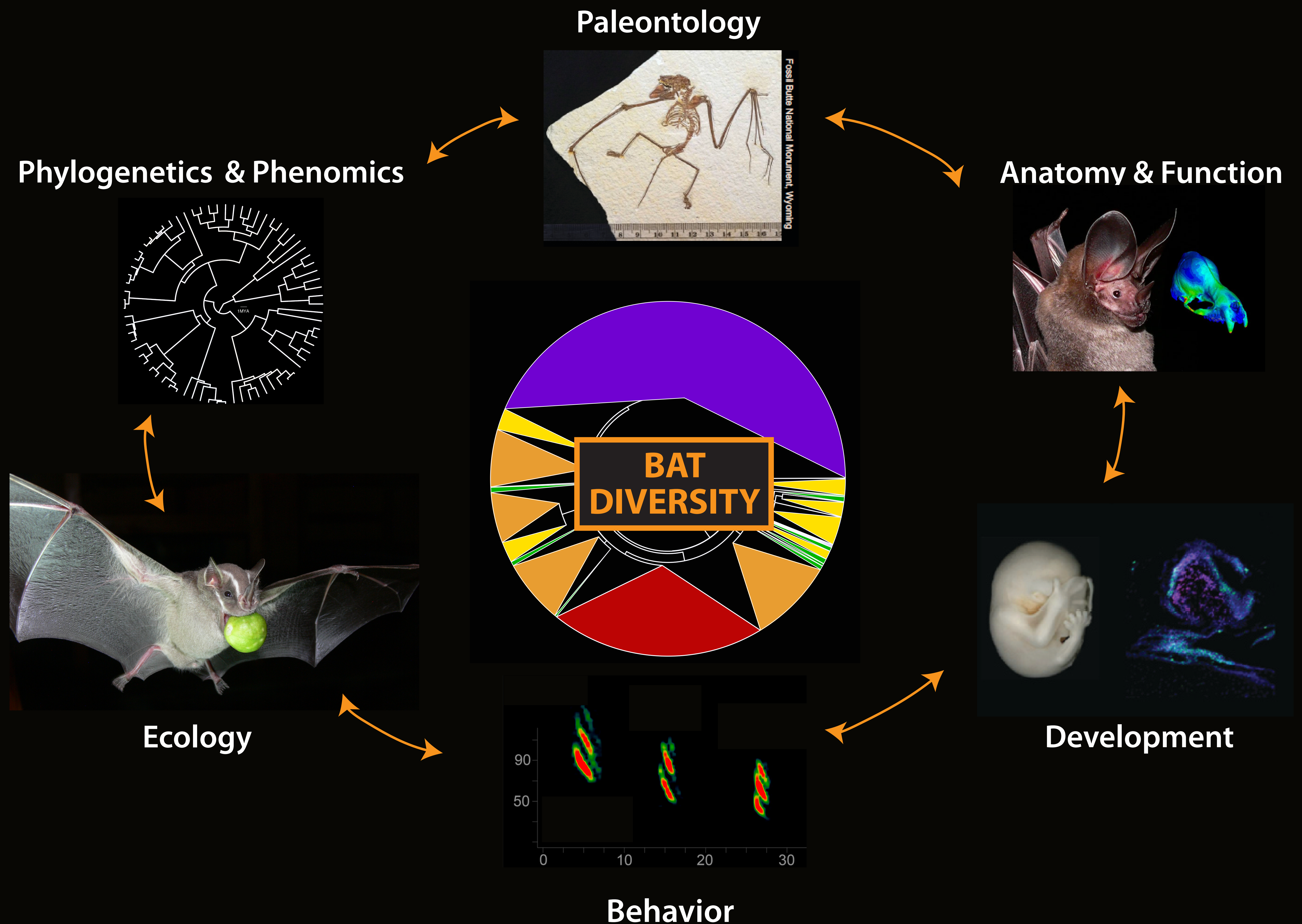


BAT PHENOMICS AND EVOLUTION NETWORK



BPEN is an informal international network of researchers who describe and document the phenotypes of living and extinct bats, and seek to elucidate the developmental, functional, and evolutionary forces that have shaped their exceptional diversity.



MAJOR GOALS

- Create opportunities for cross-disciplinary research that advances our understanding of bat diversity.
- Grow the BPEEN community and data archives to include traits beyond morphology (e.g., behavior, natural history, and ecology).
- Create training opportunities in quantitative methods to study bat phenotypes.
- Expand the BPEEN membership to include researchers in underrepresented geographic regions.

COLLABORATIVE PROJECTS

- Data and syntheses about phenotypic variation
- Origins and evolution of bats, flight and echolocation
- Evolutionary developmental biology
- Drivers and mechanisms of morphological innovation and diversification
- Responses of bat communities and lineages to past and current climate change
- New methods in phenomics and phylogenetics

WHERE? BPEEN members are located across the globe – including in the US, Argentina, Australia, Belgium, Brazil, Canada, Colombia, Czech Republic, France, Germany, Mexico, Netherlands, Spain, and UK – and many also belong to other GBatNetworks.

CONTACT

Alexa Sadier - alexa.sadier@umontpellier.fr
Sharlene Santana - ssantana@uw.edu

